

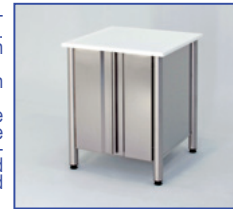
CUPBOARD TABLES WITH HINGED DOORS



SA/B 0-0 0-	Structure - mm. LxDx860h
NA/B 0-0 0-	Stainless steel top - mm. LxDx900h
AA 0-0 0-	Stainless steel top with splashback - mm. LxDx900h
QA/B 0-0 0-	Polyethylene top - mm. LxDx900h
RA 0-0 0-	Polyethylene top with splashback - mm. LxDx900h



Designed in AISI 304 scotch-brite satin stainless steel, with cylindrical legs with a 60 mm diameter fitted with and adjustable foot. Version "A" is open on a single side, while version "B" is open on both sides. The doors are double-panelled, with adjustable, internal hinges. An adjustable, middle shelf is also provided. A number of different worktops can be installed on it. These include stainless steel tops, stainless steel tops with a splash-black, white 25 mm polyethylene tops, and polyethylene tops with a splash-black. They are also available 1,5 mm s/s thick with wide round edge used for baking and pastry-making purposes, in laminated timber and in granite.



CUPBOARD TABLES WITH SLIDING DOORS



SA/B --0 0-	Structure - mm. LxDx860h
NA/B --0 0-	Stainless steel top - mm. LxDx900h
AA --0 0-	Stainless steel top with splashback - mm. LxDx900h
QA/B --0 0-	Polyethylene top - mm. LxDx900h
RA --0 0-	Polyethylene top with splashback - mm. LxDx900h



Designed in AISI 304 scotch-brite satin stainless steel, with cylindrical legs with a 60 mm diameter fitted with and adjustable foot. Version "A" is open on a single side, while version "B" is open on both sides. The doors are doubled-panelled and insulated and the lower guide is located under the base shelf so that it does not collect dirt. An adjustable, middle shelf is also provided. A number of different worktops can be installed on it. These include stainless steel tops, stainless steel tops with a splash-black, white 25 mm polyethylene tops, and polyethylene tops with a splash-black. They are also available 1,5 mm s/s thick with wide round edge used for baking and pastry-making purposes, in laminated timber and in granite.



OPEN CUPBOARD TABLES



SG/V --0 0-	Structure - mm. LxDx860h
NG/V --0 0-	Stainless steel top - mm. LxDx900h
AG --0 0-	Stainless steel top with splashback - mm. LxDx900h
QG/V --0 0-	Polyethylene top - mm. LxDx900h
RG --0 0-	Polyethylene top with splashback - mm. LxDx900h



Designed in AISI 304 scotch-brite satin stainless steel, with cylindrical legs with a 60 mm diameter fitted with and adjustable foot. Version "G" is open on one side only, while version "V" is open on both sides. An adjustable, middle shelf is also provided. A number of different worktops can be installed on it. These include stainless steel tops, stainless steel tops with a splash-black, white 25 mm polyethylene tops, and polyethylene tops with a splash-black. They are also available 1,5 mm s/s thick with wide round edge used for baking and pastry-making purposes, in laminated timber and in granite.



TABLES WITH AND WITHOUT A LOWER SHELF



SP/N --0 0-	Structure - mm. LxDx860h
NP/N --0 0-	Stainless steel top - mm. LxDx900h
AP/N --0 0-	Stainless steel top with splashback - mm. LxDx900h
QP/N --0 0-	Polyethylene top - mm. LxDx900h
RP/N --0 0-	Polyethylene top with splashback - mm. LxDx900h



Designed in AISI 304 scotch-brite satin stainless steel, with cylindrical legs with a 60 mm diameter fitted with and adjustable foot. Version "P" is available with a reinforced lower shelf while version "N" has freestanding legs. The table is provided without assembly. It is quick to assemble using eight 10 MA bolts and is very sturdy. A number of different worktops can be installed on it. These include stainless steel tops, stainless steel tops with a splash-black, white 25 mm polyethylene tops, and polyethylene tops with a splash-black. They are also available 1,5 mm s/s thick with wide round edge used for baking and pastry-making purposes, in laminated timber and in granite.



TABLES WITH REINFORCED FRAMES



SU/H --0 0-	Structure - mm. LxDx860h
NU/H --0 0-	Stainless steel top - mm. LxDx900h
AU --0 0-	Stainless steel top with splashback - mm. LxDx900h
QU/H --0 0-	Polyethylene top - mm. LxDx900h
RU --0 0-	Polyethylene top with splashback - mm. LxDx900h



Designed in AISI 304 scotch-brite satin stainless steel, with cylindrical legs with a 60 mm diameter fitted with and adjustable foot. Version "U" has a frame on two sides and on the back, while version "H" has a frame on two sides as well as a central one. The table is provided without assembly. It is quick to assemble using eight 10 MA bolts and is very sturdy. A number of different worktops can be installed on it. These include stainless steel tops, stainless steel tops with a splash-black, white 25 mm polyethylene tops, and polyethylene tops with a splash-black. They are also available 1,5 mm s/s thick with wide round edge used for baking and pastry-making purposes, in laminated timber and in granite.



TABLES WITH DRAWERS



41L -- 19	Structure - horizontal drawers - mm. LxDx860h
AC --0 19	Stainless steel top - horizontal - mm. LxDx900h
AC --5 19	Stainless steel top with splashback - horizontal - mm. LxDx900h
41V -- 19	Structure - vertical drawers - mm. LxDx860h
CA --0 19	Stainless steel top - vertical - mm. LxDx900h
CA --5 19	Stainless steel top with splashback - vertical - mm. LxDx900h



Designed in AISI 304 scotch-brite satin stainless steel, with cylindrical legs with a 60 mm diameter fitted with and adjustable foot. The sliding doors are doubled-panelled and insulated and the lower guide is located under the base shelf so that it does not collect dirt. The drawers slide on 1/1 GN size stainless steel guides with bearings. A number of different worktops can be installed on it. These include stainless steel tops, stainless steel tops with a splash-black, white 25 mm polyethylene tops, and polyethylene tops with a splash-black. They are also available 1,5 mm s/s thick with wide round edge used for baking and pastry-making purposes, in laminated timber and in granite.



HEATED TABLES



41C -- S9	Structure - static - mm. LxDx860h
C --0 19	Stainless steel top - static - mm. LxDx900h
C --5 19	Stainless steel top with splashback - static - mm. LxDx900h
41C -- V9	Structure - ventilated - mm. LxDx860h
V --0 19	Stainless steel top - ventilated - mm. LxDx900h
V --5 19	Stainless steel top with splashback - ventilated - mm. LxDx900h



Designed in AISI 304 scotch-brite satin stainless steel, with cylindrical legs with a 60 mm diameter fitted with and adjustable foot. The sliding doors, sides and back are doubled-panelled and insulated and the lower guide is located under the base shelf so that it does not collect dirt. Adjustable, perforated middle shelf. The table is heated using a single-phase tubular heating element housed inside the base shelf. In the ventilated version, air is circulated by one or two cross flow fans inserted into the base shelf. A number of different worktops can be installed on it. These include stainless steel tops, stainless steel tops with a splash-black.



TABLES WITH OPEN SPACE



41PT -- 19	Structure - with lower shelf - mm. LxDx860h
PT --0 19	Stainless steel top - lower shelf - mm. LxDx900h
PT --5 19	Stainless steel top with splashback - lower shelf - mm. LxDx900h
41AT -- 19	Structure - storage - mm. LxDx860h
AT --0 19	Stainless steel top - storage - mm. LxDx900h
AT --5 19	Stainless steel top with splashback - storage - mm. LxDx900h



Designed in AISI 304 scotch-brite satin stainless steel, with cylindrical legs with a 60 mm diameter fitted with and adjustable foot. These can be open, with a reinforced lower shelf, or closed with double-panelled, insulated sliding doors and an adjustable middle shelf. Standard tables have 440 mm of free space that can be used and are edged with a pipe reinforcement on the back and on the left-hand side. A number of different worktops can be installed on it. These include stainless steel tops, stainless steel tops with a splash-black, white 25 mm polyethylene tops, and polyethylene tops with a splash-black. They are also available 1,5 mm s/s thick with wide round edge used for baking and pastry-making purposes, in laminated timber and in granite.



REFRIGERATED TABLES



45 G 02 R- I/A	2 gastronorm compartment – mm. 1260x700x900h
45 G 03 R- I/A	3 gastronorm compartment – mm. 1720x700x900h
45 G 04 R- I/A	4 gastronorm compartment – mm. 2180x700x900h
45 E 02 R- I/A	2 euronorm compartment – mm. 1380x700x900h
45 E 03 R- I/A	3 euronorm compartment – mm. 1900x700x900h
45 E 04 R- I/A	4 euronorm compartment – mm. 2420x700x900h

Designed in AISI 304 scotch-brite satin stainless steel. A number of different worktops can be installed on it. These include stainless steel tops, stainless steel tops with a splash-black, white 25 mm polyethylene tops, and polyethylene tops with a splash-black. They are also available 1,5 mm s/s thick with wide round edge used for baking and pastry-making purposes, in laminated timber and in granite.

All tables are provided with an autonomous single-phase refrigerating unit on the side of the table, which reaches normal working temperatures "N" of (0°/+8°) and low "B" (-18°/-20°). Each space is fitted with a sliding door and is equipped with 1 chromed grill as well as the two relative guides. The legs are supplied with an adjustable foot.



OVEN BASE AND HOPPERS



BN G/E 9080	Open on legs - mm. 900x800x750h
BN G/E 9890	Open on legs - mm. 980x900x750h
BA G/E 9080	Closed with doors - mm. 900x800x750h
BA G/E 9890	Closed with doors - mm. 980x900x750h
T 40 I	Hopper – mm. 385x565x700h
T 41 I	Hopper with central divider – mm. 385x565x700h

Oven bases have cylindrical legs with a diameter of 60 mm with an adjustable foot and have a rack with six pairs of guides. Version "G" is used for gastronorm trays while version "E" is used for 600x400 euronorm trays. The upper shelf is in stainless steel.

The hoppers are wheeled and have rounded-off edges. They are completely smooth on the inside, liquid-tight and come complete with a top lid. A version with a central divider is also available.



DUSTBINS



MN/PD 50	Dustbin 50 Lt – mm. Ø 400x615h
MN/PD 70	Dustbin 70 Lt – mm. Ø 400x720h
MN/PD 90	Dustbin 90 Lt – mm. Ø 400x855h
PS 70	Bag holder 70 Lt – mm. Ø 475x850h
CQ 50 POL	Drum with lid and trolley – mm. Ø 530x900h
A 18 G	Rubber ring – mm. Ø 240x60h

The dustbins are very sturdy, liquid-tight and have wheels, lids and lifting handles on the sides. Version "MN" has a lid that can be opened by hand, while version "PD" has a pedal lid.

The rubbish bag container has a pedal lid, is on wheels, and comes complete with an elastic rubber ring.

The bin has been designed in white polyethylene with handles, like the lid, and rests on a flat stainless steel trolley with wheels.

Waste sorting holes can be created with stainless steel tops with a diameter of 210 mm (with a soft rubber ring where plates can be knocked to be emptied) and on polyethylene tops with a diameter of 170 mm.



ACCESSORIES AND CHESTS OF DRAWERS



3C -- I75	Chest of drawers on wheels – mm. 405xDx750h
3C -- I59	Chest of drawers with 3 drawers – mm. 400xDx590h
1C -- I	Chest of drawers with 1 drawer – mm. 400xDx163h
PC 40/41	Knife holders – mm. 400x70/45x400h
R/C 100 M/FM	Wheels set – mm. Ø 100x127h
A ----	Corner top – mm. DxDx40h

The drawers have stainless steel guides with bearings and can be applied on the tables (single drawer or 3 drawers) or used as a finished item in the wheeled version with a stainless steel top.

Knife blocks have either one or two rows, a polycarbonate grill and can be opened for cleaning.

If required, the tables can be provided on wheels when ordered. Version "R" is for heavy loads while version "C" is for light loads. Both versions have a normal variant "M" or a variant with brakes called "FM".

Corner joint tops are also available with splash-back and are provided without legs. However, they have brackets so that they can connect tables and standard sinks laterally.



CHESTS OF DRAWERS



3C --- K	3 drawers – stainless steel top – mm. LxDx900h
3C --- A	3 drawers – top with splashback – mm. LxDx900h
4C --- K	4 drawers – stainless steel top – mm. LxDx900h
4C --- A	4 drawers – top with splashback – mm. LxDx900h

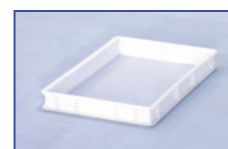


Line of chests of drawers with 3 or 4 drawers designed in AISI 304 scotch-brite satin stainless steel. A number of different worktops can be installed on it. These include a normal stainless steel version - version "K" - and version "A" that has a splash-back. The drawers slide on stainless steel guides with bearings and the chests of drawers is fitted with legs with an adjustable foot.

PIZZA DRAWERS



6G 7060 K/A	Normal runners – mm. 700x600x900h
6G 5080 K/A	Normal runners – mm. 500x800x900h
6G 9080 K/A	Normal runners – mm. 900x800x900h
6C 7055 K/A	Telescopic runners – mm. 700x550x900h
6C 5070 K/A	Telescopic runners – mm. 500x700x900h
6C 9070 K/A	Telescopic runners – mm. 900x700x900h



Line of neutral dough ball drawers with 6 drawers in AISI 304 scotch-brite satin stainless steel. A number of different worktops can be installed on it. These include a normal stainless steel version - version "K" - and version "A" that has a splash-back. Version "G" has drawers that slide on stainless steel guides, while version "C" has s/s telescopic guides. All are supplied with an inner container in white polyethylene. 900 mm wide chests of drawers have two containers that side by side in each drawer. The chest of drawers is equipped with legs with an adjustable foot.

CUPBOARDS WITH SLIDING DOORS



AL --5	2 middle shelves – mm. Lx500x1700h
AL --7	2 middle shelves – mm. Lx700x1700h
BL --5	3 middle shelves – mm. Lx500x2000h
BL --7	3 middle shelves – mm. Lx700x2000h



Designed in AISI 304 scotch-brite satin stainless steel, supplied without assembly in parcels for easy transport and handling. When assembled, they provide the same stability of their welded counterparts. The sliding doors are insulated, double-panelled and have a catch so that they can be closed. Adjustable, middle shelves provided in a number proportionate to their size. For widths greater than 1200 mm, these are divided into two elements supported by central supporting columns to provide greater carrying capacity. The legs have an adjustable foot.

CUPBOARDS WITH HINGED DOORS



ABML 08-	3 middle shelves – mm. 800xDx2000h
ABML 09-	3 middle shelves – mm. 900xDx2000h
ABML 10-	3 middle shelves – mm. 1000xDx2000h
ABML 12-	3 middle shelves – mm. 1200xDx2000h
ATM- ---	Transparent doors – mm. LxDx1900h



Designed in AISI 304 scotch-brite satin stainless steel with a welded, monobloc frame. The cupboards have double-panelled hinged door with adjustable, internal hinges are equipped with a lock and key. 3 middle shelves, 2 of which are adjustable, are also provided. The legs have an adjustable foot. We also offer a version with transparent doors. In this case, the inner shelves are available smooth, as well as drilled or in glass.

MULTIPURPOSE CUPBOARDS



AV 50	1 door – clothes holder – mm.500x500x2150h
AP 50	1 door – brooms holder – mm. 500x500x2150h
AT 50	1 door - shelves – mm. 500x500x2150h
AV 100	2 doors – clothes holder with divider – mm.1000x500x2150h
AP 100	2 doors – brooms holder – mm. 1000x500x2150h
AT 100	2 doors - shelves – mm. 1000x500x2150h



Designed in AISI 304 scotch-brite satin stainless steel with a welded, monobloc frame.
The cupboards have double-panelled hinged door with adjustable, internal hinges are equipped with a lock and key.
Available both in 500 mm version with a single door or in a 1000 mm version with a double door, containing shelves, a broom holder and a clothes rail. The 1000 m clothes rail has a central divider.
All are provided with adjustable feet and a sloped roof of 18° for easy cleaning.



CHANGING LOCKER 400



SP 01	1 place – mm. 415x400x1800h
SP 02	2 place – mm. 805x400x1800h
SP 03	3 place – mm. 1195x400x1800h
SP 01 D	1 place with divider – mm. 415x400x1800h
SP 02 D	2 place with divider – mm. 805x400x1800h
SP 03 D	3 place with divider – mm. 1195x400x1800h



Designed in AISI 304 scotch-brite satin stainless steel with a screwed frame rendered monobloc.
The lockers have double-panelled hinged doors with adjustable internal hinges, ventilation slots, and a lock and key. Each space is equipped with an upper shelf and a clothes bar below it. Version "D" has a vertical divider inside each space. The legs have an adjustable foot.
A 45° roof that can be applied to standard lockers (level) and is available as an accessory.



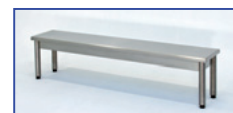
CHANGING LOCKER 500



SP 021	1 place with divider – mm. 515x500x1800h
SP 022	2 place with divider – mm. 1005x500x1800h
SP 025	2 place with bench – mm. 805x350+500x2080h
SP 035	3 place with bench – mm. 1195x350+500x2080h
SP -- PA	Bench – mm. Lx350x450h



Designed in AISI 304 scotch-brite satin stainless steel with a screwed frame rendered monobloc.
The lockers have double-panelled hinged doors with adjustable internal hinges, ventilation slots and a lock and key. Each space is equipped with an upper shelf with a clothes bar and a vertical divider for each space. The legs have an adjustable foot.
A stainless steel bench with a rounded edge can be supplied separately or integrated in a version with a 400 mm wide module, suitable for use both with and without a vertical divider.
A 45° roof that can be applied to standard lockers (level) and is available as an accessory.



OPEN HANGING CUPBOARDS



PN --	Smooth shelves – mm. Lx400x600h
PX --	Perforated shelves – mm. Lx400x600h
X1--P/ARIN	Dish rack



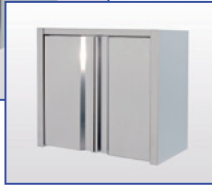
A complete range of hanging cupboards designed in AISI 304 scotch-brite satin stainless steel.
The hanging cupboards are open and have an adjustable middle shelf (not found in the version with an empty space for soaked containers).
The base and middle shelves can be either smooth or perforated. In the latter case, a stainless steel plate rack can be requested as an accessory.



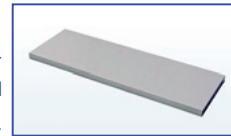
HANGIN CUPBOARDS WITH HINGED DOORS



PL 0-	Smooth shelves – mm. Lx400x600h
PF 0-	Perforated shelves – mm. Lx400x600h
X1--P/ARIN	Dish rack



A complete range of hanging cupboards designed in AISI 304 scotch-brite satin stainless steel. The hanging cupboards have hinged doors with adjustable internal hinges and an adjustable middle shelf. The base and middle shelves can be either smooth or perforated. In the latter case, a stainless steel plate rack can be requested as an accessory.



HANGIN CUPBOARDS WITH SLIDING DOORS



PL --	Smooth shelves – mm. Lx400x600h
PF --	Perforated shelves – mm. Lx400x600h
X1--P/ARIN	Dish rack



A complete range of hanging cupboards designed in AISI 304 scotch-brite satin stainless steel. The hanging cupboards have double-panelled sliding doors with an adjustable middle shelf. For widths greater than 1300 mm, the middle shelves are divided into two and are supported by small central supporting columns. This is also true for the 1200 mm version with perforated shelves, so that plate racks can be used (two 600 mm racks). The base and middle shelves can be either smooth or perforated. In the latter case, a stainless steel plate rack can be requested as an accessory.



SHELVES



P --	Wall shelves – mm. LxDx30h
M – F/R	Shelf holders – mm. DxH
CRE --0	Rack for shelf holders – mm. H
28 PM --0	Ladle holder bar – mm. L
28 1P --0	1 top table level – mm. Lx300x500h
28 2P --0	2 top table level – mm. Lx300x700h
28 1C --0	1 heating level – mm. Lx300x500h



A vast array of shelves and accessories are available, all designed in AISI 304 scotch-brite satin stainless steel that include solutions so that they can be either installed over tables or secured to the wall. The wall-mounted shelves are available smooth, drilled or grided, and can all be equipped with a backguard. The shelf holders are either fixed or adjustable on a rack, equipped with a wall-fastening system just like our highly practical ladle bars with hooks that are already inserted, so that they cannot be lost. Shelves over the tables: with 1 shelf, even with an infrared heating battery, or with 2 shelves, with small columns.



"TOP" STAINLESS STEEL SHELVING



27 1 K1 ---	1 element – mm. 40+L+40xDxH
27 1 K2 ---	2 element on line – mm. 40+L+30+L+40xDxH
27 1 K3 ---	3 element on line – mm. 40+L+30+L+30+L+40xDxH
27 1 KA ---	1+1 corner element – mm. 40+L+D+10x40+L+40xDxH
27 1 KB ---	1+2 corner element – mm. 40+L+D+10x40+L+30+L+40xDxH
27 1 KC ---	2+2 corner element – mm. 40+L+30+L+D+10x40+L+30+L+40xDxH



"TOP" stainless steel shelves are completely designed in AISI 304 scotch-brite satin stainless steel to meet aesthetic and hygienic requirements while offering closed sections and open finished surfaces. When calculating size, the following must be taken into account: W width of the shelf – D depth of the cross member – H height of the side. The slot joint between a linear cross member and upright improves stability with respect to the weight it carries, while the shelves are independent and can be moved, removed or added without needing to adjust any other element. The modularity of the depth, the corner connecting systems and width and size of shelves that can be made to measure as well allow for different size combinations to take advantage of the space available.

